

Fig 1: Layout of water tanks

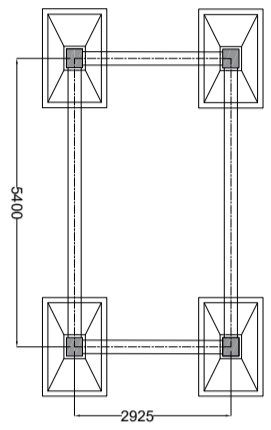


Fig 2: Layout of footing

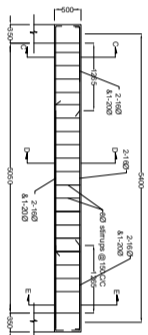


Fig 5: Reinforcement detailing of main beam

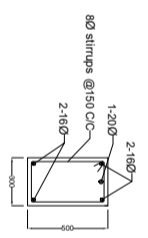


Fig 6: Main beam cross section at CC & EE

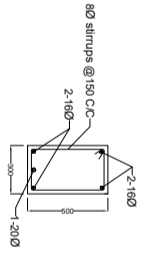


Fig 7: Main beam cross section at DD

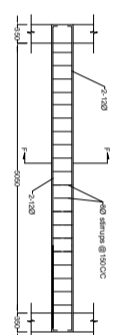


Fig 8: Reinforcement detailing of bracing beam

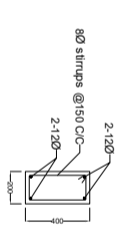


Fig 9: Bracing beam cross section at FF

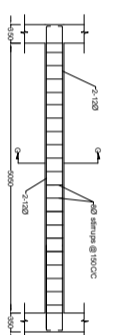


Fig 10: Reinforcement detailing of the beam

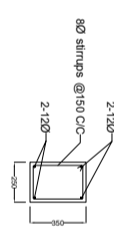


Fig 11: Tie beam cross section at GG

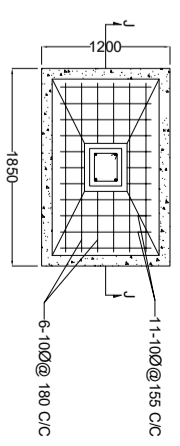


Fig 16: Plan of footing

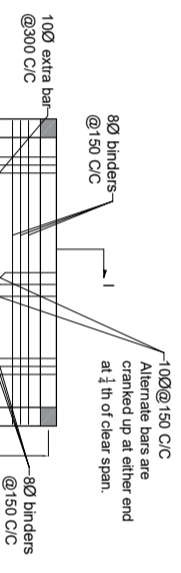


Fig 12: Reinforcement detailing of slab

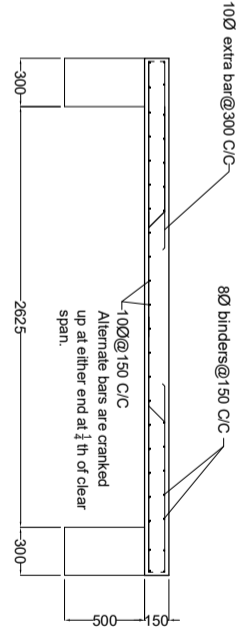


Fig 13: Slab cross section at II

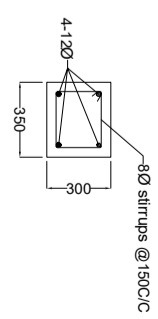


Fig 17: Column cross section

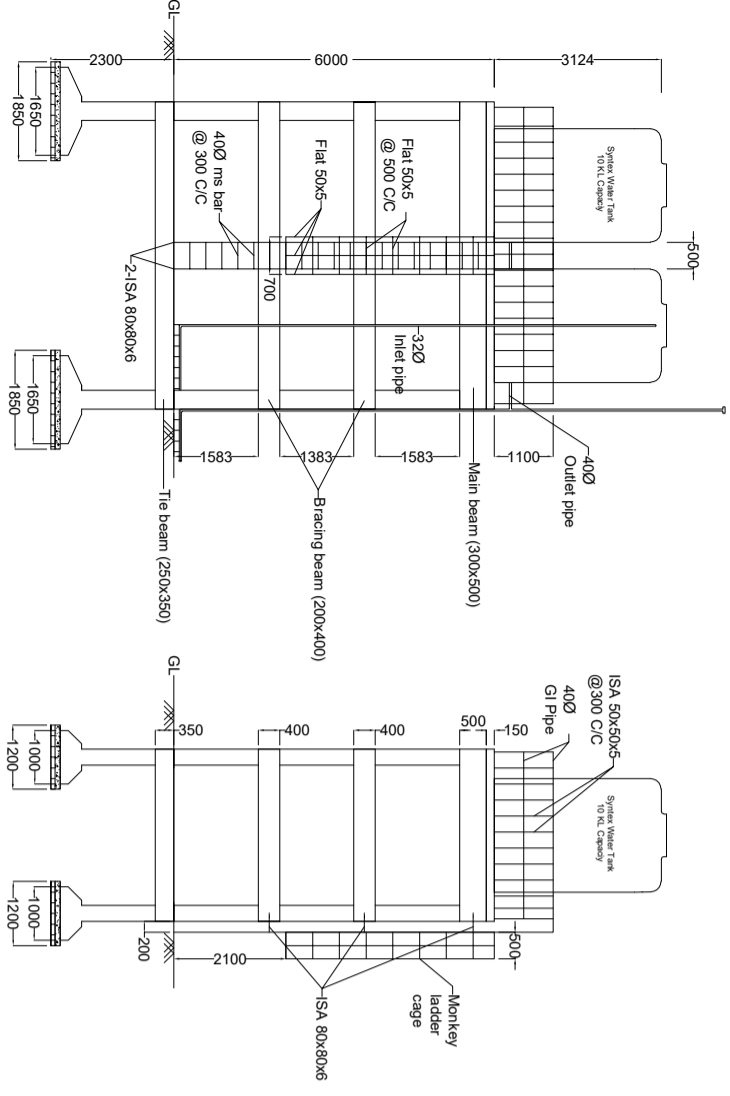


Fig 3: Section at AA

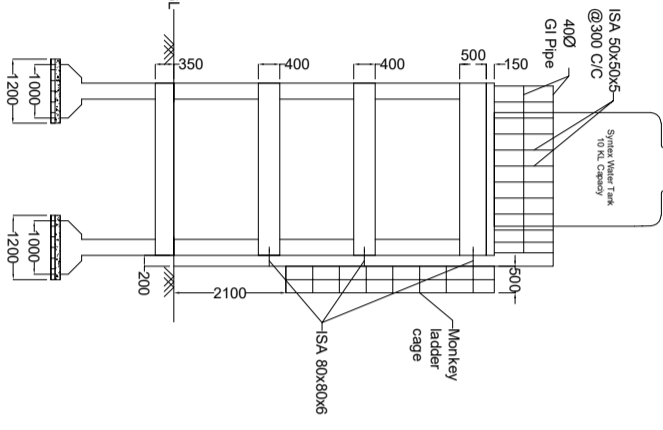


Fig 4: Section at BB

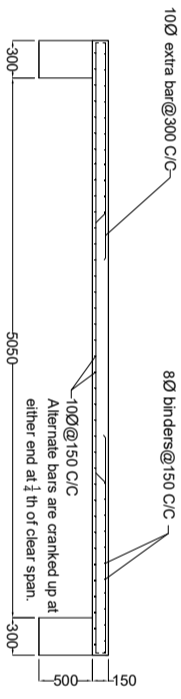


Fig 14: Slab cross section at HH

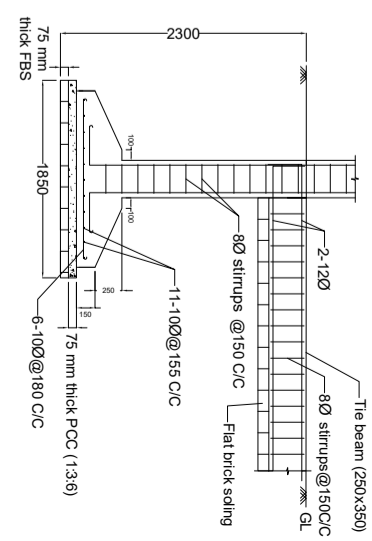


Fig 15: Footing cross section at JJ

- Important Notes:**
1. All dimensions are in mm.
  2. Concrete to be used is M20 Grade (1:1.5:3) unless otherwise specified.
  3. Clear cover for slab, main beams, bracing beams are 20 mm and that for columns, the beam and footing are 40 mm and 50 mm respectively.
  4. Size of main beams, bracing beams, the beams and columns are 300 mm x 500 mm, 200 mm x 400 mm 250 mm x 350 mm and 300 mm x 350 mm respectively.